



SONJA HENIE TROPHY 2026

Announcement

Interclub competition

Basic Novice, Intermediate Novice

March 5th - 8th 2026

1. GENERAL REGULATIONS

Sonja Henie Trophy Interclub will be conducted in accordance with the ISU Constitution and General Regulations 2024, the ISU Special Regulations & Technical Rules Single & Pair Skating and Ice Dance 2024, as well as all updated ISU Communications.

Participation in Sonja Henie Trophy is open for clubs who belong to an ISU Member, and qualify with regard to eligibility according **Sonja Henie Trophy Interclub** open to all Competitors in Basic Novice and Intermediate Novice -girls and boys, **Club/ISU Member** and qualify with regard to eligibility according to Rule 102, provided their ages fall within the limits specified in Rule 108, paragraph 3c.

Passports of all Skaters, as well as the ISU Clearance Certificate, if applicable, must be presented at the accreditation of the event for verification.

Please note that the Sonja Henie Trophy competition will take place at the same time. Details are stated in a separate announcement. (Advanced Novice, Junior and Senior)

2. TECHNICAL DATA

Arena: Sonja Henie Ishall, Middelthuns gate 26, 0368 Oslo, Norway

An indoor heated ice-rink with the ice surface of 28 x 58 m.

The rink is located downtown Oslo, in Majorstuen/Frogner area, close to restaurants and shopping.

Basic Novice Boys: In accordance with the general requirements for Novice competitions, ISU Communication 2699.

Basic Novice Girls: In accordance with the general requirements for Novice competitions, ISU Communication 2699.

Intermediate Novice Boys: In accordance with the general requirements for Novice competitions, ISU Communication 2699.

Intermediat Novice Girls: In accordance with the general requirements for Novice competitions, ISU Communication 2699.

Rule 108, : .In International Novice Competitions a Novice is a Skater who has met the following requirements *before July 1 preceding the competition*:

- i) Basic Novice - has not reached the age of fourteen;
- ii) Intermediate Novice - has not reached the age of sixteen;

3. ENTRIES OF SKATERS, JUDGES AND TEAM MEMBERS

Entries of skaters

Final Entry must be registered in online entry form by January 28th 2026 at the latest.

Entries will be confirmed Jan. 30th the latest.

The organizer has the right to limit the maximum number of entries in each category if needed.

Entries of Coaches

Official entries of Coaches will be accepted. Accreditation will be provided to those who are officially accepted by the Organizer. There is no accreditation given for Chaperones.

The registration of all competitors and coaches must be entered via the online entry form (1 form per skater)

Online entry form

Entry deadline: **January 28th, 2026.**

Entries of Judges

Each participating ISU Member has the right to nominate one judge per discipline with the International or ISU qualification.

In case of too many nominated judges the organizer will draw the panel of judges immediately after the deadline. The result of the draw will be communicated to all ISU Members involved in writing immediately after the conclusion of the draw. Each panel of Judges will consist of at least 5 Judges.

The judges entered will be serving both in the Sonja Henie Trophy and Sonja Henie Interclub (Thursday).

Deadline for the judges in ORS: January 28th, 2026.

Payment Entry fee and unofficial practice

The entry fee is 85 € per skater. The invoice for each club will be sent after January 28th 2026. ***The total amount must be paid in one transfer.***

Entry fee can not be refunded in case of withdrawal after January 28th 2026. Entry fee will be refunded if the skater is not accepted (in case of a limited number of entries). Unofficial practice must be paid with a credit card at the Accreditation office.

4. MEETINGS FOR OFFICIALS AND JUDGES

All Referees, Technical Controllers, Technical Specialists, Data and Replay Operators and Judges are responsible for making their travel arrangements to be able to attend the respective event-related meetings (initial judges meeting, technical panel meeting, Round table discussion and technical panel review). If any other party makes the flight arrangements, the Referees, Technical Controllers, Technical Specialists, Data and Replay Operators and the Judges are responsible for checking if such arrangements are in line with the detailed schedule as mentioned under paragraph p.16.

5. BOARDING, LODGING AND TRAVEL EXPENSES

The Organizing Committee will provide and cover the expenses for both boarding and lodging for all Referees, Technical Controllers, Technical Specialists, Data and Replay Operators, and Judges beginning from **Wednesday, March 4** until breakfast on **Monday, March 9**.

Should any of the above-mentioned officials arrive at the hotel before or stay longer than the period described above, their room costs and expenses will be the responsibility of the individual and must be paid on arrival.

The Organizing Committee will cover the travel expenses for all Referees, Technical Controllers, Technical Specialists, Data and Replay Operators.

Breakfast will be served in the official's hotel Thon Gyldenløwe. Lunch and dinner will be served in the arena.

6. MUSIC AND PLANNED PROGRAM CONTENT

Each skater must *register elements and upload music files in mp3* not later than February 15th 2026 here:

<https://nsfstevnebase.nif.no/international/>

The medium with the music files will be kept until the end of the competition.

CDs will not be accepted by the OC.

Each Competitor must have its own back-up drive (USB Stick) for each program in the format of an MP3 file. Any other format will not be accepted.

The **music file must be labeled** with the abbreviation of the Category, ISU Member, name of the category, segment, and the name(s) of the competitor(s).

Example: **JUN_Men_ NOR_Men_SP_Olsen_Peter**

If the music is not provided, accreditation will not be given.

7. ARRIVAL OF SKATERS / TEAMS/OFFICIALS

The Oslo Airport Gardermoen is located approximately 50 km from Oslo city center. Upon arrival at Oslo Airport Gardermoen, take the train to Nationaltheatret (approx. 20 minutes). From there, it's a 6–8 minute walk to both skaters' hotels

The Competitors, Coaches, Team leaders and additional team officials are responsible for their own arrangements concerning ground transportation to and from the airport.

The Organizing Committee will organize transport from **Oslo Central Station** for Officials only.

8. TRANSPORTATION

There is no organized transportation between the rink and the hotels. As a sustainability-focused event, we encourage participants to use public transport or walk to the arena.

Getting to the rink Sonja Henie ishall:

- **From the hotel Scandic Solli:** Take a direct tram number 12 in direction Majorstuen. Get off at Vigelandsparken tram stop (approx 7 min.ride). From there it is a 2 min walk to the rink.
- **From the hotel Thon Gyldenløve:** the rink is located 900 m from the hotel.

9. ACCREDITATION

Skaters and coaches registered for the Sonja Henie Interclub will receive accreditation. Chaperons will not receive accreditation. Accreditation will be open from 14:00 on Wednesday at the Arena.

10. RESULTS, DRAW AND FREE SKATING STARTING ORDER

Judging and calculations will be done according to ISU Special Regulations Single & Pair Skating and Ice Dance 2024, Rules 352 and 353.

The draws will be conducted according to ISU Rule 512 and 513.

11. AWARDS

The three best-placed Competitors in each event will be announced and honored at the official Victory Ceremony. Gold, silver and bronze medals will be presented to the medalists. The national anthem of the winner will be played.

12. INSURANCE/ LIABILITY

In accordance with Rule 119, it is the sole obligation of each Member participating in ISU Events, to provide medical and accident insurance for their athletes, officials and all other members of the Member's team. Such insurance must assure full medical attendance and also the return of the ill or injured person to the home country by air transport or by other expeditious means. It is an internal matter of each ISU Member to decide the issue of who shall pay the premium for such insurance.

The ISU and the Organizing Committee assume no responsibility for or liability with respect to bodily or personal injury or property damage incurred in connection incurred by Competitors and Officials.

13. ACCOMMODATION AND MEALS

Official hotels:

Hotel Scandic Solli

Parkveien 68, Oslo

All room rates are per room per night and include breakfast, VAT and free Wi-Fi.

Single room	Wednesday - Monday	NOK 1090
Double room	Wednesday - Monday	NOK 1290
Triple room	Wednesday - Monday	NOK 1470
4-bed room	Wednesday - Monday	NOK 1680

Booking with code BNOR050326 gives the reduced price until Feb.2 2026.

[Book here](#)

Thon Hotel Gyldenløve

Bogstadveien 20, Oslo

All room rates are per room per night and include breakfast, VAT and free Wi-Fi.

Booking [with this link](#) gives Sports price until Feb.2 2026.

Thon Hotel Gyldenløve is also the hotel for the Officials.

14. PRACTICE

It is possible to book unofficial practice ice via weblink on Wednesday. Price: 30 Euro pr. skater for a 30 minute session. A link for booking will be issued after the time of registration in the Sportity app. No music will be played. Practice booking deadline: March 1, 2026.

The schedule will be published in the Sportity app after the final entry deadline.

Official Practice will only be offered for Advanced Novice, Junior and Senior.

15. INFORMATION

For further information, please contact the Organizing Committee:

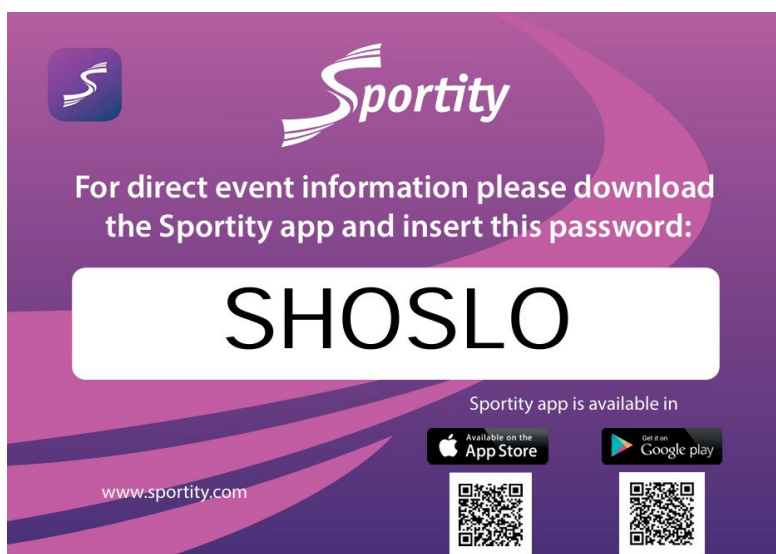
Sonja Henie Trophy Organizing Committee

Norwegian Skating Association & Oslo Skøiteklub

Email: nsfevent@nif.idrett.no

Web: <https://www.skoyteforbundet.no/sonjahenietrophy>

Keep yourself up to date on Sportity-app



The banner features the Sportity logo at the top left. Below it, the text reads: "For direct event information please download the Sportity app and insert this password:". The password "SHOSLO" is displayed in a large white box. At the bottom, it says "Sportity app is available in" followed by "Available on the App Store" and "Get it on Google play" with their respective logos and QR codes. The website "www.sportity.com" is also visible at the bottom left.

The event will be streamed and photos from the competition will be published. More details will be published in the Sportity app.

17. FORMS AND RETURN DATES

Entry for Competitors and coaches: January 28, 2026	<u>Online entry form</u>
Hotel Booking: Feb. 2, 2026	Direct to hotel
Music and Planned Program: Feb.15th , 2026	<u>https://nsfstevnebase.nif.no/international</u> <u>L</u>

18. PRELIMINARY TIME SCHEDULE

Wednesday March 4th

16.00

Unofficial practice (pre-booking)

Draw Basic Novice, Intermediate Novice, Advanced Novice, Junior Women

Thursday March 5th

Official practice

Initial Judges Meeting

Technical Panel Meeting

Basic Novice FS

Intermediate Novice FS

Victory Ceremonies

Draw Junior Men, Senior Men, Senior Women

Advanced Novice SP

Unofficial practice (pre-booking)

Friday March 6th

Official practice

Initial Judges Meeting

Technical Panel Meeting

Junior Women SP

Advanced Novice FS

Victory Ceremonies

Round Table Discussion Advanced Novice

Technical Panel Review meeting Advanced Novice

Unofficial practice (pre-booking)

Saturday March 7th

Official practice

Junior Men SP

Senior Men FS

Senior Women SP

Junior Women FS

Victory Ceremonies

Round Table Discussion Junior Women

Technical Panel Review meeting Junior Women

Sunday March 8th

Official practice

Junior Men FS

Senior Men FS

Senior Women FS

Victory Ceremonies

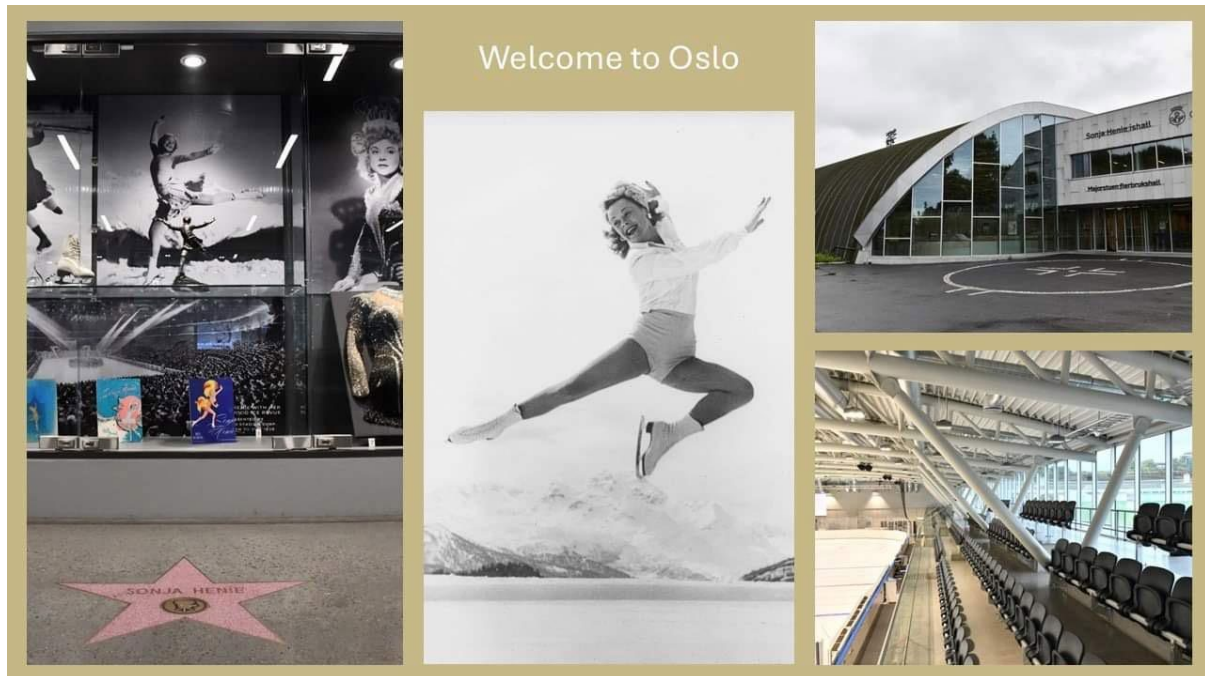
Round Table Discussion Junior Men, Senior Men, Senior Women

Technical Panel Review Junior Men, Senior Men, Senior Women

****SUBJECT TO BE CHANGED!** *FS is skated in reverse order of SP results*

19. Sonja Henie Ice Rink and OSLO

Come to Oslo and experience our modern and bright skating rink from 2020 named after the legendary Norwegian figure skater Sonja Henie. Abundant use of glass secures a lot of natural light and creates a stylish atmosphere. During winter there is also an outdoor rink. If the temperature allows it you can skate outside. In the cafeteria you can both see the rink through big windows, and also a small Sonja Henie exhibition.



Sonja Henie Ice Rink (Photographer: Gunvor Bay)

Sonja Henie ice rink is situated in the heart of Oslo next to one of Oslo's most visited sites: The Vigeland sculpture park.

There are numerous public transportation options nearby the ice rink. Majorstuen tube station is only a 10-minute walk away, and there are also trams and buses only a couple of minutes' walk away.

Oslo, the capital city of Norway, is a vibrant and culturally rich destination that offers a unique blend of natural beauty, historical landmarks, and modern attractions. Nestled along the shores of the Oslo Fjord, this cosmopolitan city seamlessly combines urban sophistication with the tranquility of nature.

Visitors to Oslo are greeted by a range of iconic sights. The Viking Ship Museum houses remarkably preserved Viking vessels, offering a glimpse into Norway's seafaring past. The Munch Museum is a tribute to the world-renowned artist Edvard Munch, displaying an extensive collection of his works, including the iconic painting "The Scream."

Nature enthusiasts will be captivated by the numerous parks and green spaces scattered throughout the city. Vigeland Park, adorned with over 200 striking sculptures by Gustav Vigeland, is a testament to human emotion and connection.



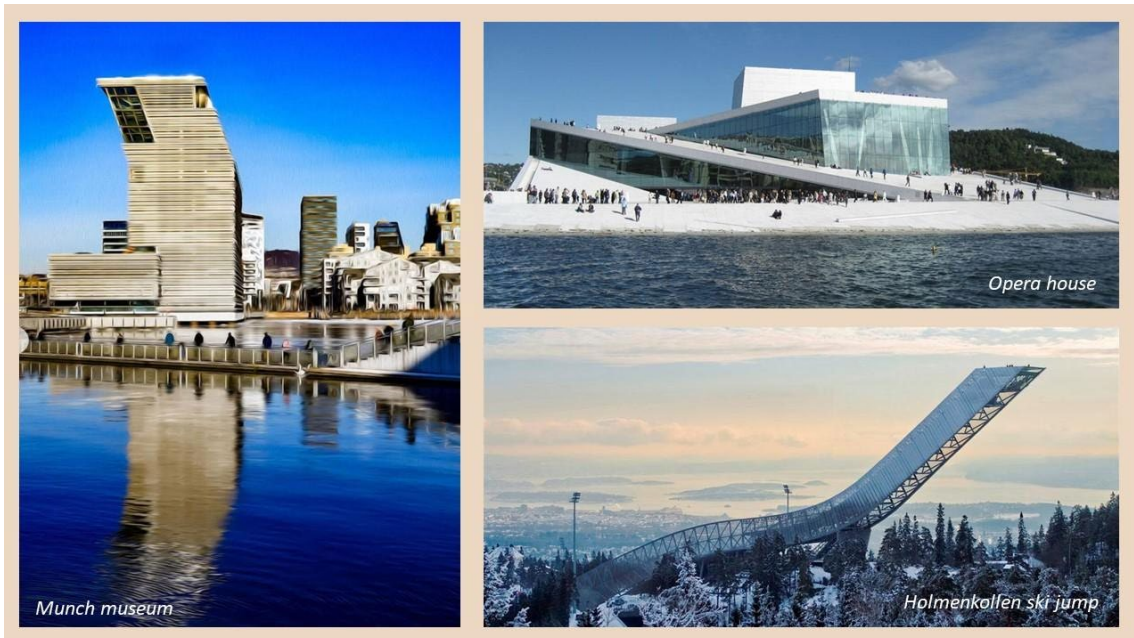
Vigeland Sculpture Park (Photographer: Gunvor Bay)

The Oslo Opera House, with its unique architecture and panoramic views from the roof, is another must-see attraction.

For those seeking cultural immersion, Oslo's culinary scene is a delightful surprise. From traditional Norwegian delicacies like salmon and reindeer to a diverse range of international cuisines, the city caters to every palate. The Aker Brygge waterfront district is a hub of restaurants, shops, and entertainment venues, making it a popular gathering spot.

Moreover, Oslo is a city that prides itself on sustainability and eco-friendliness. Its efficient public transportation system, including trams, buses, and ferries, makes it easy to explore the city and its surrounding areas. The city's commitment to green spaces and clean energy is evident in its many parks and the futuristic Barcode District.

In summary, Oslo is a captivating destination that seamlessly blends history, nature, and modernity. Its rich cultural offerings, stunning natural landscapes, and commitment to sustainability make it a must-visit city for any traveler looking to experience the best of Norway.



There are many restaurants and cafes close to the ice rink. Here are some recommendations.

Sonja Henie Ice Rink has a nice and warm indoor cafe with seating, and where you have a great view into the rink. The cafe offers cold and hot drinks and various small dishes and snacks.

The nearest place to buy a coffee is Kaffebrenneriet in Middelthuns gate 15a - just a couple of minutes walk for the rink. Of course we also have black coffee in the Sonja Henie cafe at the rink, but if you prefer a Cafe Latte or similar, Kaffebrenneriet is the place to go.

There is a beautiful cafe in the middle of Vigelandsparken, called Anne på landet. The cafe is situated by the bridge in the main part of the park. Only a few minutes walk from the ice rink. Be sure to visit the park during the stay in Oslo.

Restaurants close to the Sonja Henie Ice Rink:

Frenchie in Middelthuns gate 17 is a new restaurant where you get French classics with a modern twist. 3-5 mins walk.

Piazza Italia in Frognerveien 58 welcomes everyone to an authentic Italian culinary experience, and the dishes are based on old, traditional recipes, with most of them originating from the Rome region.

Tatakii Asian in Middelthuns gate 25 is an Asian restaurant which draw inspiration from both Japanese and Chinese cuisine.

Il Bolognese in Middelthuns gate 25a is a small, charming Italian delicatessen shop which also has a serving of delicious Italian pasta dishes, sandwiches and Italian wines.

Lofotstua in Kirkeveien 40 is a casual fish restaurant which serves seasonal specialities from the North of Norway. Seafood takes center stage on the menu, with everything prepared in true Lofoten style.

Kverneriet i Kirkeveien 64b is a great burger restaurant. They serve delicious handcrafted burgers and fries, and also a variety of other dishes that suits all tastes.

Ghost Pizza in Kirkeveien 51 is a cool and urban pizza restaurant. 3 min walk

There are many restaurants in the area of Majorstuen. The main shopping and dining street close to the Ice Rink is called Bogstadveien. Here you will find shops, restaurants, cafes and supermarkets.

Close to the hotels there will be numerous restaurants.

Welcome to NORWAY and Oslo!